

Instructions



Milk NA1

Norm Architects

2010

Congratulations with your Milk lamp, designed in 2010 by Norm Architects. We hope you will enjoy using this product and follow these instructions to ensure correct installation. If you have any questions or comments, please do not hesitate to contact us by mail on:

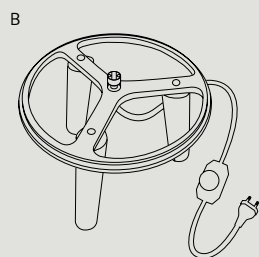
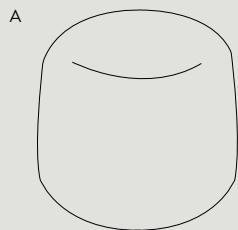
info@andtradition.com

Milk NA1

Norm Architects

2010

Please read these instructions carefully and retain them for future reference to ensure that the product is used correctly. For your own safety, please study each step of this instruction manual first. &Tradition is not responsible for any faults or damages caused by not following these instructions correctly. Do not modify this product in any way.



Content

- A Glass shade
- B Stand and light holder
- C 2m fabric cord with diffuser switch and two pin plug.

Tools needed

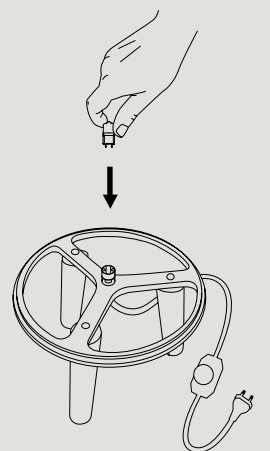
- Bulb type G9

Safety precautions

- Dispose of plastic bag from packaging and do not allow children to play with it.
- Keep product well out of children's reach.
- The lamp is only intended for interior use.
- Consult a professionally qualified electrician if in any doubt.
- Do not place the cable within reach of small children or anywhere with a risk of falling over it.
- If the external cable or cord of this lamp is damaged, it must be replaced by the manufacture or a similar qualified person in order to avoid a hazard.

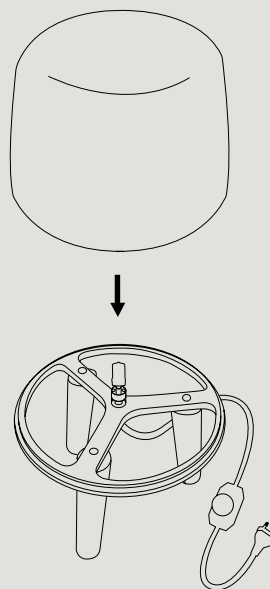
Cleaning instructions

- Wipe surface of the glass shade with a soft, damp sponge or cloth, and wipe immediately.
- Do not use any abrasive cleaning tools such as steel wool, scouring sponges or stiff brushes.
- Never use strong cleaning agents such as white spirit, turpentine, household glass cleaner or cellulose thinners.
- Only wipe the inside of the shade with a soft, damp cloth or feather duster.



Step 1

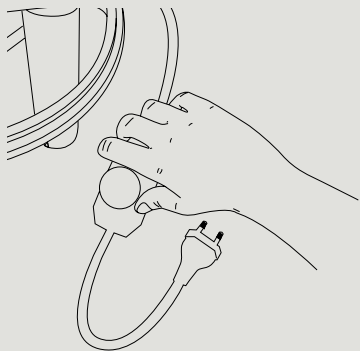
Insert a G9 bulb (max 40W) in the socket placed on the stand.



Step 2

Carefully lower the glass shade onto the stand.

For indoor use only
G9 maximum 40W
Bulb Not included



Step 3

Insert the plug into a wall socket and use the dimmer switch to turn the light on and off. Rotating the wheel switch on the dimmer will regulate the brightness of the lamp.